



CHURCH & WELLESLEY

TORONTO, ONTARIO





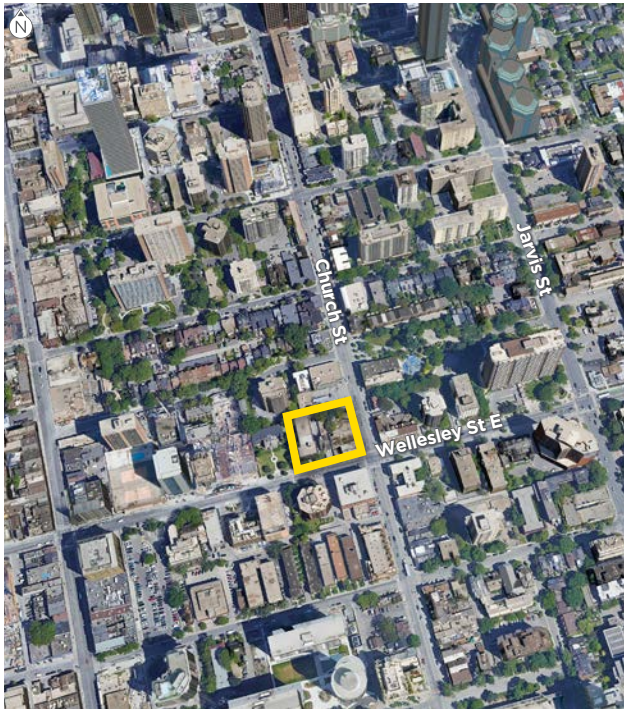
Church & Wellesley

Church Street and Wellesley Street E, Toronto, ON



This mixed-use development is situated at Toronto’s landmark corner of Church Street and Wellesley Street East right in the heart of the vibrant LGBTQ+ community, downtown Toronto’s most diverse and lively neighbourhood. The area is an urban destination for locals to gather and is a major tourist attraction for the Toronto Pride Festival, nightlife, and celebration of arts and culture. Only a few steps away from Wellesley subway station, the project is conveniently located near transit and is within walking distance to downtown’s world-class shopping, restaurants, sports, entertainment, and Canada’s largest financial district.

The development will feature 433 residential suites (approx. 650 residents) above 30,700 sq. ft. of retail space comprising of 9,800 sq. ft. of flexible ground floor retail and a 21,900 sq. ft. Farm Boy grocery store on the second floor.



SIZE (NLA)

Total Retail.....	30,700 sq. ft.
Ground Floor.....	9,800 sq. ft.
Second Floor (Grocer).....	20,900 sq. ft.

OPENING

Construction.....	Future
Occupancies.....	Future

TRADE AREA

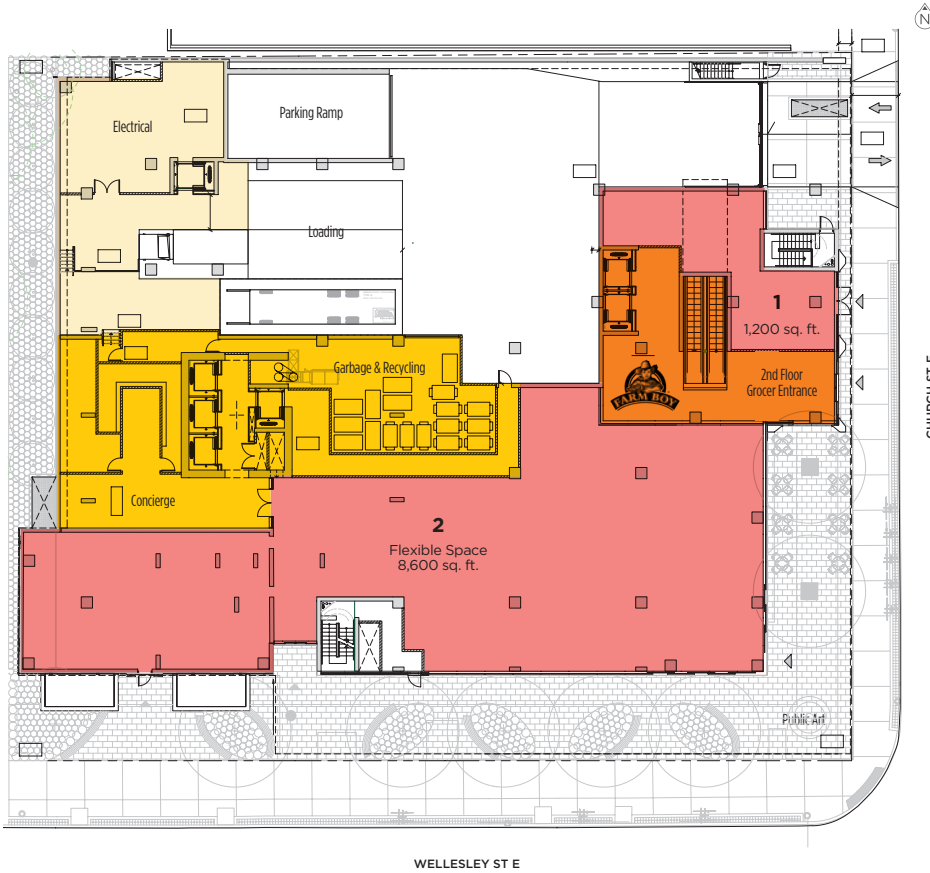
	2022 ESTIMATE	2027 PROJECTION	2032 PROJECTION
Within 400 m	22,005	24,181	25,467
Within 800 m	79,116	88,274	94,296
Within 1 km	94,352	106,313	114,909



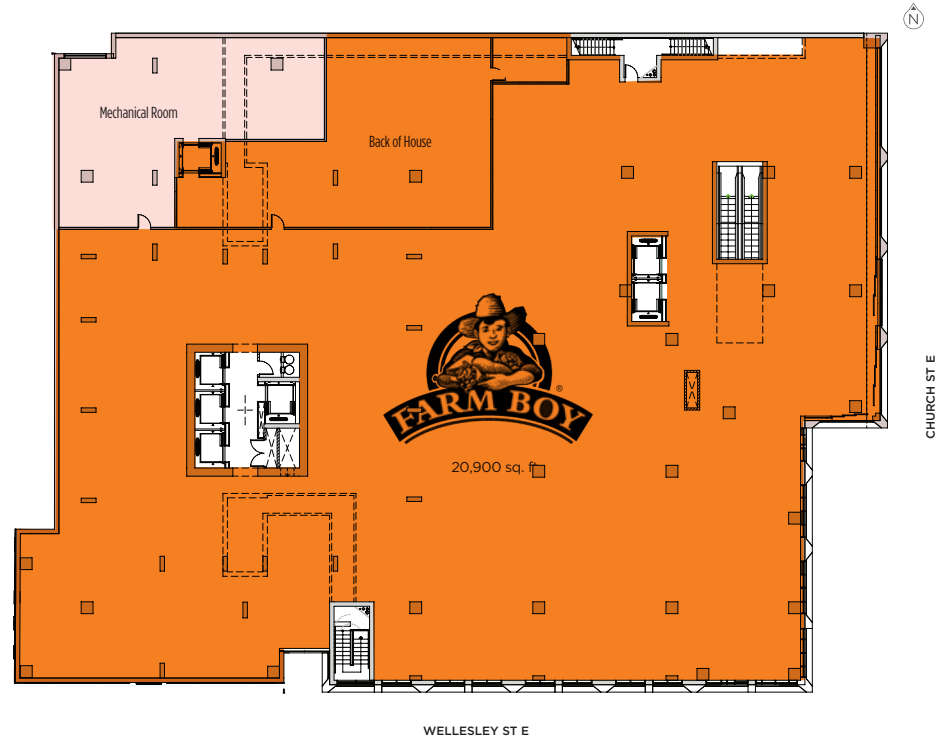
Church & Wellesley

Church Street and Wellesley Street E, Toronto, ON

GROUND FLOOR



SECOND FLOOR



- Retail
- Retail Services
- Grocer
- Residential
- Residential Services



Church & Wellesley

Church Street and Wellesley Street E, Toronto, ON





one properties

LEASING CONTACTS

ROBERT MULVALE

Vice President, Retail Leasing

Desk: 647.256.1017 **Cell:** 416.949.9112

E-mail: rmulvale@oneproperties.com

oneproperties.com